

13 October 2008

Marshbank Park
West Bloomfield Township
PARKS & RECREATION COMMISSION

Seasonal Restroom & Porch

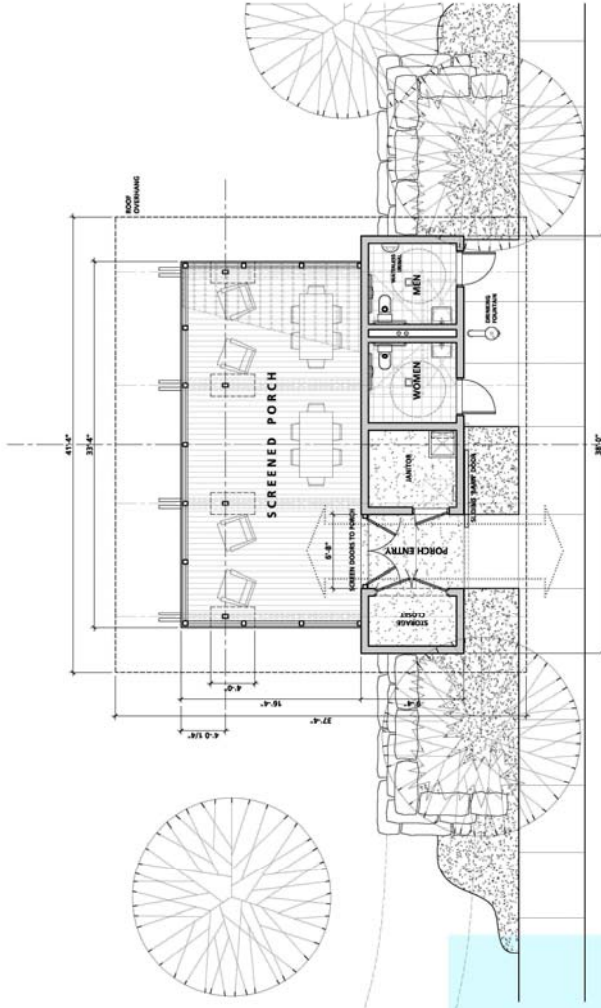
COLOR RENDERING

BUILDING DATA	
Screened Porch	544 SF
Enclosed, First Floor Level	395 SF
Basement Level	236 SF
Total	1135 SF
Roof Area	1543 SF

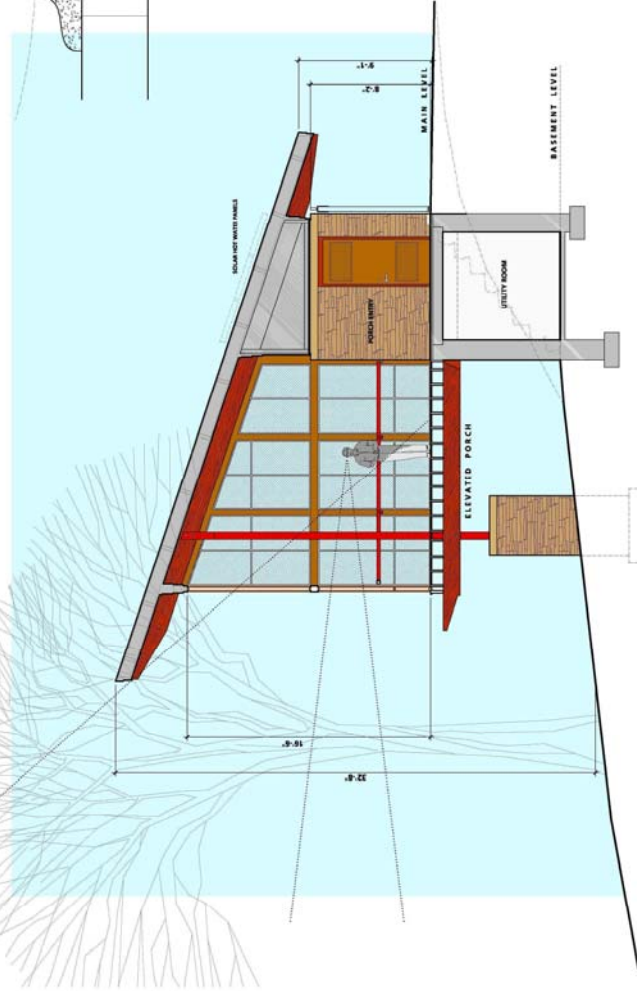
SUSTAINABLE DESIGN

TOILETS: Compostable, foam-flush Clivus Multitrum toilets and waterless urinal.

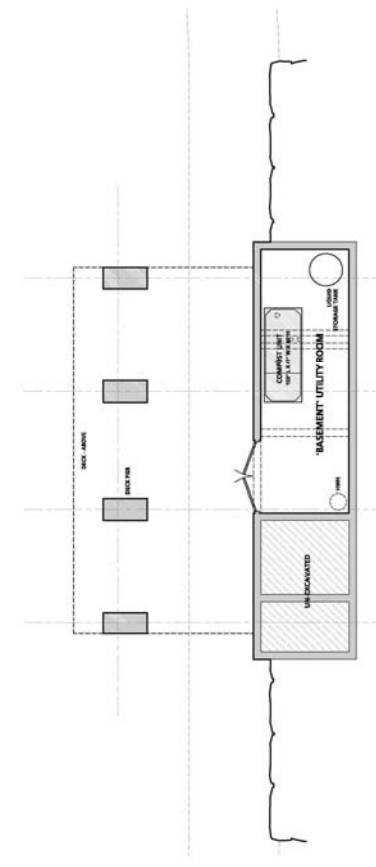
HOT WATER: Possible solar hot water heating.



PRELIMINARY
RESTROOM BUILDING PLAN - MAIN LEVEL
SCALE 3/8" = 1'-0"



PRELIMINARY
RESTROOM BUILDING - SECTION / ELEVATION
SCALE 3/8" = 1'-0"
SECTION THRU ENTRYWAY - LOOKING EAST



PRELIMINARY
RESTROOM BUILDING PLAN - BASEMENT PLAN
SCALE 3/8" = 1'-0"

BECKETT & BARBER, INC.
LANDSCAPE ARCHITECTURE - PLANNING - ENGINEERING
1515 W. WILKINS ST. ANN ARBOR, MICHIGAN 48103-1003 (734) 663-3822
COOPER DESIGN INC.

ARCHITECTURE - LANDSCAPE ARCHITECTURE - HISTORIC PRESERVATION - URBAN DESIGN
2000 MCCORMACK RD. ANN ARBOR, MICHIGAN 48104-1022 (734) 769-3207 EMAIL: info@beckettbarber.com